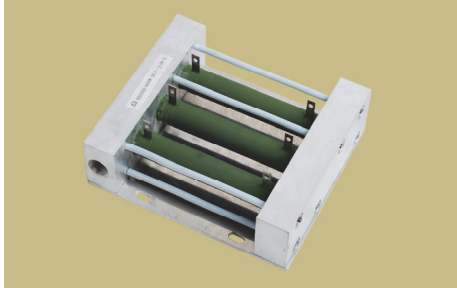


水冷系列电阻 Water cooled resistor

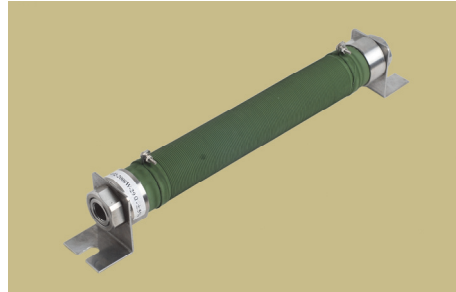
- 产品功能：广泛用于机械设备、电炉、冶炼、风力发电和太阳能发电行业，可依客户要求任意设计。
Function: Used in mechanical equipment, electric furnace, smelting, wind power and solar power generation industry, can be customized according to user requirements.
- 冷却方式：间接水冷、直接水冷。Categories: Indirect water resistance、Direct water-cooled resistor
- 产品特点：体积小，功率大、工作稳定、安全可靠。 Feature: Small size, big power, Stable and reliable.

■ 适用标准 Applicable Specifications

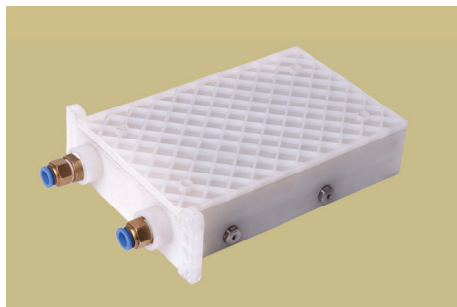
- Q/RU474-2012 功率型水冷电阻器详细规范



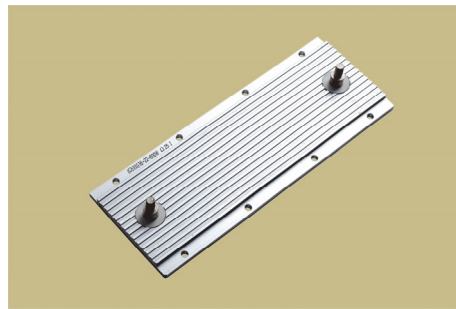
RXGS02



RXGS03



RXGS01



RXG16-1

■ 主要技术指标 Main specifications

型号 Type	RXGS02	RXGS03	RIGS01	RXG16-1
阻值范围(Ω) resistance range	0.1~500	0.1~500	10~1K	0.01~1
功率范围 power range(W)	500~5000	500~5000	100~3000	500~1000
耐压 KVAC/min 50Hz withstand voltage	2~3	2~3	2~3	1~2
三相/单相 3 phase/2 Phase	三相 3 phase,	单相 2 phase,	单相 2 phase,	单相 2 phase,
安装方式 mounting	竖直安装 vertical mounting	竖直安装 vertical mounting 水平安装 Horizontal mounting	竖直安装 vertical mounting	水平安装 Horizontal mounting
水冷方式 category	直接水冷 Direct	直接水冷 Direct water-cooled	直接水冷 Direct	间接水冷 Indirect water-cooled

注：外形尺寸可按用户要求设计 Dimension can be designed according to users' requirements.

■ 订货指南 Ordering Information

RXGS02 – 2000W –30 Ω – \pm 5% –2/3

型号 Type – 额定功率 Rated Power–标称阻值 Resistance–允许偏差 Resistance Tolerance–单相 2 Phase/三相 3 Phase

对于本页内容的任何变更，恕不另行通知。订货前，请确认技术参数。Specifications are subject to change without notice.