



- 阻值范围宽 Wide resistance range
 - 厚膜、无感设计 Thick film, non-inductive design
 - 符合 UL94-VO 标准 UL94-VO qualified
 - 适用于变速驱动、自动控制、控制设备、以及高频电路和终端电路
- Used in speed drivers, auto control device, control device, high frequency and terminal circuits

RIG800 型大功率电阻器 RIG800 Power resistor

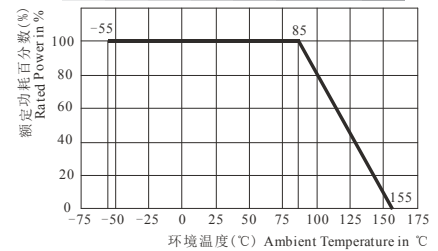
■ 适用标准 Applicable specifications

- GB/T5729-2003 电子设备用固定电阻器 第一部分：总规范
- Q/RU480-2012 RIG800 功率型塑封电阻器详细规范

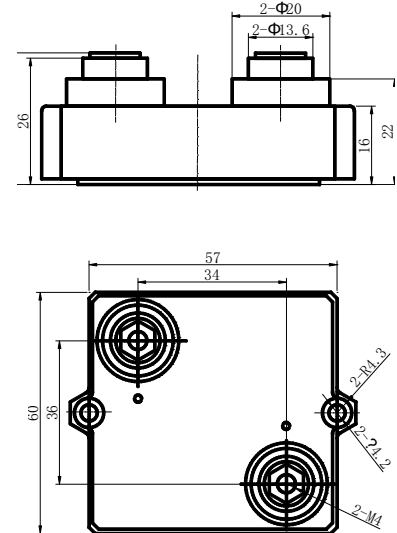
■ 主要技术指标 Technical and standard electrical specifications

- 阻值范围 Resistance range: 10Ω~1MΩ
- 阻值允许偏差 Resistance tolerance: ±5%
(Tolerance within ±1%~±10% available upon request)
- 额定功率 Rated power: 800W
- 电阻温度系数 TCR: $\leq \pm 150 \times 10^{-6} / ^\circ\text{C}$
- 最大工作电压 Maximum working voltage: 5000V_{DC}
- 耐电压 (50Hz, I_{max}:10mA) Voltage proof: 6000V_{AC}
- 绝缘电阻 (500V) Insulation voltage: $\geq 10\text{G}\Omega$
- 工作温度范围 Working temp: -55°C~155°C
- 局部放电 (4KV) Partial discharge: <10pc
- 单个冲击电压 (1.5/50us) Single voltage shock: 12KV
- 电阻安装 Method of mounting: M4 螺丝, Screws

■ 降功耗曲线 Derating



■ 外形尺寸图 Dimensions



公差：除注明外均为±0.3mm
Annotate: Tolerance is ±0.3mm, unless otherwise specified

■ 主要检验项目、检验方法及性能要求 Performance

| 检验项目 Test | 检验方法 Conditions of test | 性能要求 Test limits |
|------------------------------|--|---|
| 瞬时过载 Transient overload | 1.5U _R or U _{max} 取较小者, whichever smaller 10s | $\Delta R \leq \pm(0.4\%R + 0.05\Omega)$ |
| 温度冲击 Thermal shock | -55°C/+155°C, 5 cycles | $\Delta R \leq \pm(0.5\%R + 0.05\Omega)$ |
| 寿命 Load life | U _R , 1000h, 底板中心温度, Baseplate center temperature 85°C | |
| 稳态湿热 Damp heat, Steady state | 40°C, RH:90%~95%, 56 days | $\Delta R \leq \pm(0.25\%R + 0.05\Omega)$ |
| 振动 Vibration | 10g, 5Hz~500Hz, 1.5h | |
| 气候顺序 Climatic sequence | (55/175/56) | $\Delta R \leq \pm(1\%R + 0.05\Omega)$ |

■ 订货指南 Ordering information

RIG800 – 800W – 10KΩ – J

型号 Type – 额定功率 Rated power – 标称阻值 Nominal resistance – 允许偏差 Tolerance

对于本页内容的任何变更，恕不另行通知。订货前，请确认技术参数。Specifications are subject to change without notice.