

- 轴的尺寸和轴端可按用户要求供货  
Bespoke shaft dimension and shape available upon request
- 可提供密封型产品 Sealed products available

**PD2210/PD2205/PD2203 型精密多圈线绕电位器**  
**PD2210/PD2205/PD2203 Precision, multi-turn, wirewound potentiometer**

■ **适用标准 Applicable Specifications**

- GB/T15298-94 电子设备用电位器 第一部分: 总规范
- Q/RU805-2005 PD2210 型精密多圈线绕电位器详细规范

■ **电特性 Electrical Characteristics**

- 标称阻值范围 Range of rated resistance ( $\Omega$ ): 100~100K
- 阻值允许偏差 Tolerance:  $\pm 5\%$
- 线性精度 Linearity  $\pm 0.25\%$   
(可提供 $\pm 0.15\%$ ,  $\pm 0.15\%$  available upon request)
- 终端电阻 Terminal resistance:  $\leq 0.25\%R$  或  $2\Omega$ , 取较大者  
 $\leq 0.25\%R$  或  $2\Omega$ , Whichever greater
- 峰值噪声 Peak Voltage ( $\Omega$ ):  $\leq 100$
- 绝缘电阻 Insulation Resistance:  $R_i \geq 1G\Omega$
- 电气角度 Electrical angle:  
PD2210:  $3600^\circ \pm 4^\circ$   
PD2205:  $1800^\circ \pm 4^\circ$   
PD2203:  $1080^\circ \pm 4^\circ$
- 电阻体极限电压 Limiting Element Voltage(V): 300
- 动触点极限电流 limiting moving contact current (mA): 50

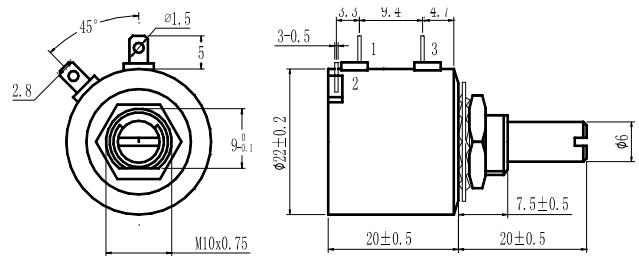
■ **环境特性 Environmental Characteristics**

- 额定功率 Rated Power (300Umax)  
 $2W@70^\circ C$ ,  $0W@125^\circ C$
- 温度范围 Temperature range( $^\circ C$ ):  $-55 \sim +125$
- 电阻温度系数 TCR:  $\leq \pm 100 \times 10^{-6}/^\circ C$
- 冲击 Shock: GB/T15298-94, 4.35 item  
 $\Delta R \leq \pm (0.5\%R + 0.05\Omega)$
- 振动 vibration: GB/T15298-94, 4.35 item  
 $\Delta R \leq \pm (0.5\%R + 0.05\Omega)$ ,  $\Delta(U_{ab}/U_{ac}) \leq \pm 1\%$
- 稳态湿热 Damp heat, steady state GB/T15298-94, 4.39 item  
 $\Delta R \leq \pm (2\%R + 0.1\Omega)$ ,  $R_i \geq 100M\Omega$
- 电气耐久性 Electrical Endurance:  $70^\circ C, 2W, 1000h$   
 $\Delta R \leq \pm (0.2\%R + 0.1\Omega)$
- 转动噪声 Rotational noise:  $\leq 500\Omega$
- 机械耐久性 Mechanical Endurance: 25000 cycles;  
 $\Delta R \leq \pm (5\%R + 0.1\Omega)$

■ **物理特性 Physical Characteristics**

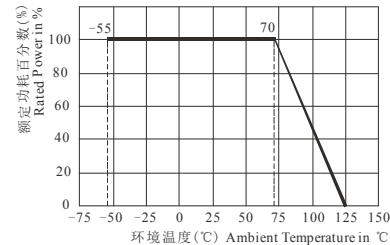
- 启动力矩 Starting torque:  $\leq 3mN.m$
- 终端止档力矩 Clutch Torque:  $\leq 300mN.m$
- 重量 Weight:  $\leq 25g$
- 标志: 商标、产品型号、阻值、日期代码、电路图  
Marking: Code symbol, Type, Resistance, Date code, Circuit Diagram
- 标准包装 Standard package: 20 只/盒, 20pcs/box
- 安装形式 Mounting  
轴套安装(Bushing Mounted)  
轴套螺纹(screw thread of the bushing)为  $M10 \times 0.75$

■ **外形尺寸图 Dimensions**

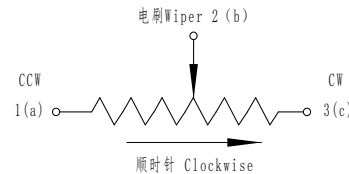


公差按 GB1804-79,  
Tolerance is as specified in GB1804-79

■ **降功耗曲线 Derating**



■ **电路图 Circuit Diagram**



■ **标称阻值表**

**Nominal Resistance Table**

阻值 ( $\Omega$ ) Resistance	分辨率 (%) Resolution
100	0.08
200	0.061
500	0.043
1K	0.036
2K	0.029
5K	0.02
10K	0.018
20K	0.014
50K	0.008
100K	0.007

■ **订货指南 Ordering Information**

**P-D-2210-10k**

精密 Precision - 线绕 Wirewound -  
型号 Type - 标称阻值 Resistance